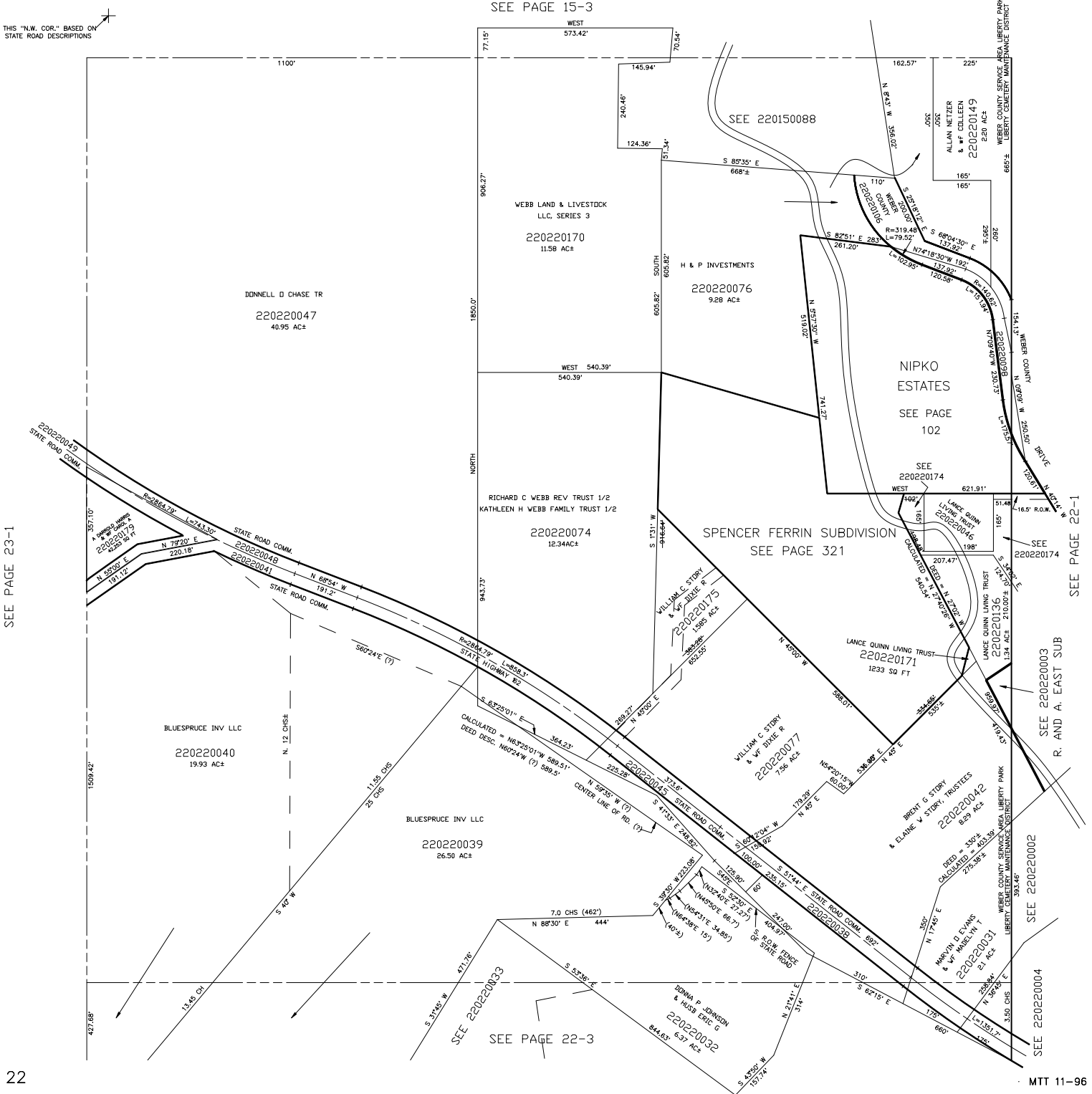


THE N.W. 1/4 OF SECTION 28, T.7N., R.1E., S.L.B. & M.
IN WEBER COUNTY
SCALE 1" = 200'

TAXING UNIT: 36

SEE PAGE 15-3

THIS "N.W. COR." BASED ON STATE ROAD DESCRIPTIONS



SEE PAGE 23-1

SEE PAGE 22-1

SEE 220220003 R. AND A. EAST SUB

SEE 220220002

SEE 220220004

SEE PAGE 22-3